

## KEKERENGU DREAMTIME

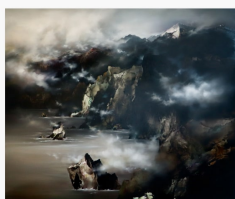
SIMON EDWARDS

22 June - 23 July 2023



*Kekerengu Dreamtime #24, 2023*  
Oil on ACM panel  
630 x 700mm fr.

\$5,500



*Kekerengu Dreamtime #5, 2022*  
Oil on ACM panel  
1500 x 1830mm

\$21,000



*Kekerengu Dreamtime #19, 2023*  
Oil on ACM panel  
900 x 1220mm

\$14,500



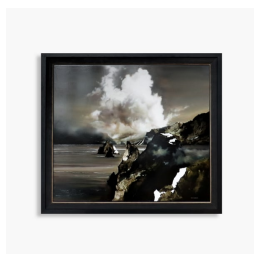
*Kekerengu Dreamtime #22, 2023*  
Oil on ACM panel  
630 x 700mm fr.

\$5,500



*Kekerengu Dreamtime #25, 2023*  
Oil on ACM panel  
630 x 700mm fr.

\$5,500



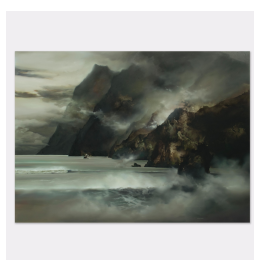
*Kekerengu Dreamtime #13, 2022*  
Oil on ACM panel  
630 x 700mm fr.

\$5,500



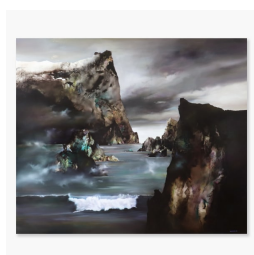
*Kekerengu Dreamtime #14, 2022*  
Oil on ACM panel  
630 x 700mm fr.

\$5,500



*Kekerengu Dreamtime #26, 2023*  
Oil on ACM panel  
900 x 1220mm

\$14,500



*Kekerengu Dreamtime #4, 2022*  
Oil on ACM panel  
1500 x 1830mm

\$21,000



*Kekerengu Dreamtime #23, 2022*  
Oil on ACM panel  
630 x 700mm fr.

\$5,500



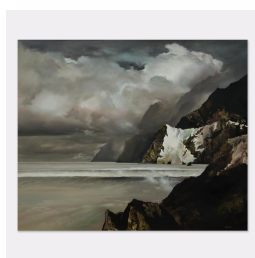
*Kekerengu Dreamtime #18, 2023*  
Oil on ACM panel  
1500 x 2150mm

\$23,500



*Kekerengu Dreamtime #21, 2023*  
Oil on ACM panel  
840 x 990mm fr.

\$9,900



*Kekerengu Dreamtime #20, 2023*  
Oil on ACM panel  
840 x 990mm fr.

\$9,900

Artist Simon Edwards spent his childhood in the countryside of the South Island, gaining a Bachelor of Fine Arts at the University of Canterbury in 1997. Through layers of oil paint and ink vigorously rubbed, brushed and glazed, he conjures dark mountain spaces and lakes under looming skies that feel familiar to us all.

Edwards continues to work and live in Christchurch and is represented in many national collections, including the Christchurch Art Gallery, Te Puna o Waiwhetū. In 2005 he won the "People's Choice Award" in the Anthony Harper Art Prize and in 2006 the first prize in Landscape in the Parklane Art Awards.

Although one can be reminded of Romantic painters such as Turner and Constable when viewing his work, Edwards interestingly identifies as a modernist painter, stating:

*"The work places itself somewhere between a modernistic reliance of the essential qualities (of the materials and the methods of painting) and an awareness of the traditional forms of the landscape...the work becomes a result of what is happening on the surface at the time and building on chance effects that present themselves, contributing to a sense of space distance and movement."*